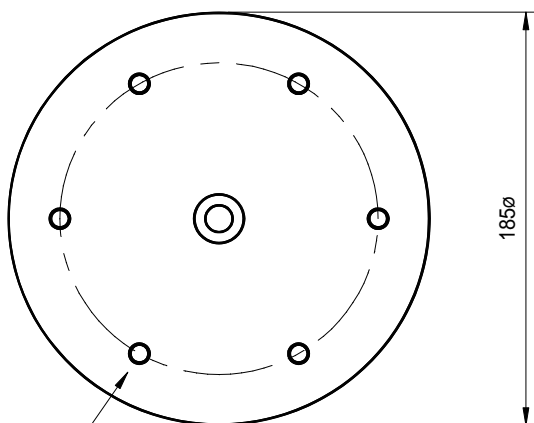
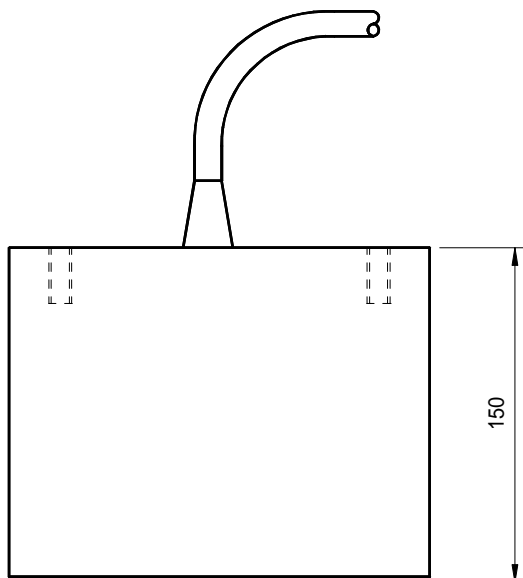


- 6 FREQUENCY OPTIONS
- GROUND DISCRIMINATION
- FISHING : NAVIGATION : SURVEYING
- HULL OR OVER-SIDE MOUNTING
- LOW SIDE-LOBES
- ROBUST NYLON HOUSING



Mounting holes in  
6 places M8 x 25  
equi-spaced on a  
140 P.C.D.



All dimensions in mm

Available in a choice of six different frequencies, the I72 SERIES is designed to be compatible with a wide range of vertical depth finding echo-sounders.

With seven pre-stressed piston elements and internal matching-transformer the I72 offers a high performance at a low cost.

The high impact strength nylon body provides a mechanically robust, corrosion free transducer suitable for tank, hull or over-side mounting.

The versatility of the design is further enhanced by the option of a ground discrimination 'GD' feature providing an indication of the sea bed roughness.

# MODEL 172 SERIES

## *Single Beam Transducers*

### Technical Specification

Frequency Options	24	28	30	33	38	50	kHz
Beam Angle (-3dB)	23	19	18	16.5	14	11	Degrees Conical
Transmit Sensitivity	167	168	168	167	166	171	dB re uPa/V @ 1m
Receive Sensitivity	-164	-166	-167	-168	-169	-178	dB re V/uPa
Input Power	1000	1000	1000	1000	1000	1000	Watts
Bandwidth	2.8	3.5	3.0	3.5	3.5	5.0	kHz
Nominal Impedance	75	75	100	100	100	75	Ohms

Transducer impedance can be adjusted to suit customers specification

Cable Length	10 Metres Standard (Additional lengths supplied to order)
Cable Type	Polyurethane Ø12mm 2 Core Screened
Storage Temperature	-40 to +80 °C
Operating Temperature	-5 to +70 °C

Data illustrated is taken from actual in-water measurements